

## Certificate of Analysis

### Compliance Test

**CBD Isolate**  
Sample Matrix:  
HEMP  
Extract  
Ingestion



**Client Information:**  
**ERG Consultants**  
6547 N Academy Blvd  
#2376  
Colorado Springs,  
Colorado 80918

**Manufacturing Facility:**  
ERG Consultants  
6547 N Academy Blvd  
#2376  
Colorado Springs, Colorado 80918  
Production Date: 2025-10-16

**Batch Data:**  
Batch # ERG-1003  
Batch Date: 2025-10-22  
Extracted From: Hemp

**Order Details:**  
Test Reg State: Florida

**Food Permits:**

**Order #**  
ERG251022-010001  
**Order Date:** 2025-10-22  
**Sample #** AAHE025

**Sampling Date:** 2025-10-23  
**Lab Batch Date:** 2025-10-23  
**Completion Date:** 2025-10-29

**Initial Gross Weight:** 66.100 g  
**Net Weight:** 11.392 g

**Net Weight per Package:**  
11392.000 mg

**Net Weight per Serving:**  
11392 mg  
**Servings Per Package:**  
1



Product Image

**Potency**  
Passed

**Heavy Metals**  
Passed

**Pesticides**  
Passed

**Residual Solvents**  
Passed

### Potency Summary

<b>Delta 9 THC</b>	<b>0.0732%</b>	<b>Total Active CBD</b>	<b>99.1%</b>
per Serving	8.34 mg	per Serving	11300 mg
per Package	8.34 mg	per Package	11300 mg
<b>Total CBG</b>	<b>&lt;LOQ</b>	<b>Total CBN</b>	<b>&lt;LOQ</b>
per Serving	0.00 mg	per Serving	0.00 mg
per Package	0.00 mg	per Package	0.00 mg
<b>Total Cannabinoids</b>	<b>100.0%</b>	<b>Total Active THC (LA)</b>	<b>0.0732%</b>
per Serving	11400 mg	per Serving	8.34 mg
per Package	11400 mg	per Package	8.34 mg
<b>Total Active THC</b>	<b>0.0732%</b>		
per Serving	8.34 mg		
per Package	8.34 mg		

Aixia Sun Lab Director/Principal Scientist  
D.H.Sc., M.Sc., B.Sc., MT (AAB)



Definitions and Abbreviations used in this report: Total Active CBD = CBD + (CBD-A \* 0.877), \*Total CBDV = CBDV + (CBDVA \* 0.867), Total Active THC = THCA-A \* 0.877 + Delta 9 THC, Total THCV = THCV + (THCVA \* 0.87), CBG Total = (CBGA \* 0.878) + CBG, CBN Total = (CBNA \* 0.876) + CBN, Total CBC = CBC + (CBCA \* 0.877), Total THC-O-Acetate = Delta 8 THC-O-Acetate + Delta 9 THC-O-Acetate, Total THCP = Delta8-THCP + Delta9-THCP, Total Cannabinoids = Total percentage of cannabinoids within the sample, (mg/ml) = Milligrams per Milliliter, LOQ = Limit of Quantitation, LOD = Limit of Detection, Dilution = Dilution Factor, (ppb) = Parts per Billion, (%) = Percent, (cfu/g) = Colony Forming Unit per Gram, (µg/g) = Microgram per Gram, (ppm) = Parts per Million, (ppm) = (µg/g), (w) = Water Activity, (mg/Kg) = Milligram per Kilogram. ACS uses simple acceptance criteria. Passed - Analyte/microbe is not detected or is at the level below the action limit per FL rule 64ER20-39, 5K-4.036, 5K-4.034. Failed - Analyte/microbe is at the level that equal or above the action limit per FL rule 64ER20-39, 5K-4.036, 5K-4.034 The results apply to the sample as received.

This report shall not be reproduced, without written approval, from ACS Laboratory. The results of this report relate only to the material or product analyzed. Test results are confidential unless explicitly waived otherwise. ACS Laboratory is accredited to the ISO/IEC 17025:2017 Standard. This facility meets the human health and food safety sanitation requirements of the Kentucky Cabinet for Health and Family Services as documented by KYCHFS. The scope of this analysis is limited to the parameters listed in this COA. Testing for food additives (e.g., preservatives, colorant, flavor enhancers) was not conducted. Therefore, no conclusions should be drawn regarding the presence or absence of such additives. The current and valid permit number for the facility issued by a human health or food safety regulatory entity with authority over the facility is stated above, and that the facility meets the human health or food safety sanitation requirements of the regulatory entity as documented by the regulatory entity and evidenced by the valid permit number.

**Certificate of Analysis**  
**Compliance Test**

**CBD Isolate**  
**Sample Matrix:**  
HEMP  
Extract  
Ingestion



**Client Information:**  
**ERG Consultants**  
6547 N Academy Blvd  
#2376  
Colorado Springs,  
Colorado 80918

**Manufacturing Facility:**  
ERG Consultants  
6547 N Academy Blvd  
#2376  
Colorado Springs, Colorado 80918  
Production Date: 2025-10-16

**Batch Data:**  
Batch # ERG-1003  
Batch Date: 2025-10-22  
Extracted From: Hemp

**Order Details:**  
Test Reg State: Florida

**Food Permits:**

**Order #**  
ERG251022-010001  
**Order Date:** 2025-10-22  
**Sample #** AAHE025

**Sampling Date:** 2025-10-23  
**Lab Batch Date:** 2025-10-23  
**Completion Date:** 2025-10-29

**Initial Gross Weight:** 66.100 g  
**Net Weight:** 11.392 g

**Net Weight per Package:**  
11392.000 mg

**Net Weight per Serving:**  
11392 mg  
**Servings Per Package:**  
1



**National Panel Potency**  
Specimen Weight: 101.870 mg

**Passed**

SOP13.001 (LCUV)

Analyte	Dilution (1:n)	LOD (mg/g)	LOQ (%)	Result (mg/g)	(%)	Per Serving (mg)	Per Package (mg)
CBD	10.000	.0000421	0.002	991	99.1	11300	11300
CBDV	10.000	.0000614	0.002	7.74	0.774	88.2	88.2
Delta-9 THC	10.000	.0000571	0.002	0.732	0.0732	8.34	8.34
CBC	1000.000	.0000514	0.002	0.257	0.0257	2.93	2.93
CBCA	10.000	0.000107	0.002	<LOQ	<LOQ	0.00	0.00
CBCV	10.000	.0000307	0.002	<LOQ	<LOQ	0.00	0.00
CBDA	10.000	.0000143	0.002	<LOQ	<LOQ	0.00	0.00
CBDVA	10.000	0.000014	0.002	<LOQ	<LOQ	0.00	0.00
CBE	10.000	.0000483	0.002	<LOQ	<LOQ	0.00	0.00
CBG	10.000	.0000507	0.002	<LOQ	<LOQ	0.00	0.00
CBGA	10.000	.0000847	0.002	<LOQ	<LOQ	0.00	0.00
CBGM	10.000	.000116	0.002	<LOQ	<LOQ	0.00	0.00
CBGV	10.000	.0000287	0.002	<LOQ	<LOQ	0.00	0.00
CBL	10.000	.0000919	0.002	<LOQ	<LOQ	0.00	0.00
CBN	10.000	.0000597	0.002	<LOQ	<LOQ	0.00	0.00
CBNA	10.000	0.000014	0.002	<LOQ	<LOQ	0.00	0.00
CBT	10.000	0.000325	0.004	<LOQ	<LOQ	0.00	0.00
CBV	10.000	.0000670	0.002	<LOQ	<LOQ	0.00	0.00
Delta-8 THC	10.000	.0000808	0.002	<LOQ	<LOQ	0.00	0.00
Delta-8 THC-O Acetate	10.000	0.000027	0.002	<LOQ	<LOQ	0.00	0.00
Exo-THC	10.000	0.000054	0.002	<LOQ	<LOQ	0.00	0.00
THCA-A	10.000	0.000938	0.004	<LOQ	<LOQ	0.00	0.00
THCV	10.000	.0000276	0.002	<LOQ	<LOQ	0.00	0.00
Total Active THC	10.000			0.732	0.0732	8.34	8.34
Total Active CBD	10.000			991	99.1	11300	11300

Aixa Sun Lab Director/Principal Scientist  
D.H.Sc., M.Sc., B.Sc., MT (AAB)



Definitions are found on page 1

This report shall not be reproduced, without written approval, from ACS Laboratory. The results of this report relate only to the material or product analyzed. Test results are confidential unless explicitly waived otherwise. ACS Laboratory is accredited to the ISO/IEC 17025:2017 Standard. This facility meets the human health and food safety sanitation requirements of the Kentucky Cabinet for Health and Family Services as documented by KYCHFS. The scope of this analysis is limited to the parameters listed in this COA. Testing for food additives (e.g., preservatives, colorant, flavor enhancers) was not conducted. Therefore, no conclusions should be drawn regarding the presence or absence of such additives. The current and valid permit number for the facility issued by a human health or food safety regulatory entity with authority over the facility is stated above, and that the facility meets the human health or food safety sanitation requirements of the regulatory entity as documented by the regulatory entity and evidenced by the valid permit number.

QA By: 1057 on 2025-10-29 18:14:16 V1

Page 2 of 5  
Form F672

## Certificate of Analysis

### Compliance Test

**CBD Isolate**  
Sample Matrix:  
HEMP  
Extract  
Ingestion



**Client Information:**  
**ERG Consultants**  
6547 N Academy Blvd  
#2376  
Colorado Springs,  
Colorado 80918

**Manufacturing Facility:**  
ERG Consultants  
6547 N Academy Blvd  
#2376  
Colorado Springs, Colorado 80918  
Production Date: 2025-10-16

**Batch Data:**  
Batch # ERG-1003  
Batch Date: 2025-10-22  
Extracted From: Hemp

**Order Details:**  
Test Reg State: Florida

**Food Permits:**

**Order #**  
ERG251022-010001  
**Order Date:** 2025-10-22  
**Sample #** AAHE025

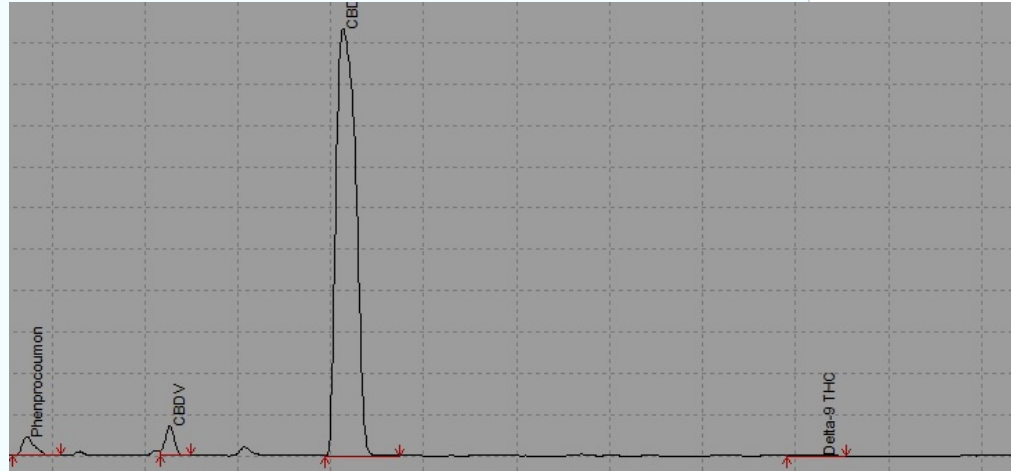
**Sampling Date:** 2025-10-23  
**Lab Batch Date:** 2025-10-23  
**Completion Date:** 2025-10-29

**Initial Gross Weight:** 66.100 g  
**Net Weight:** 11.392 g

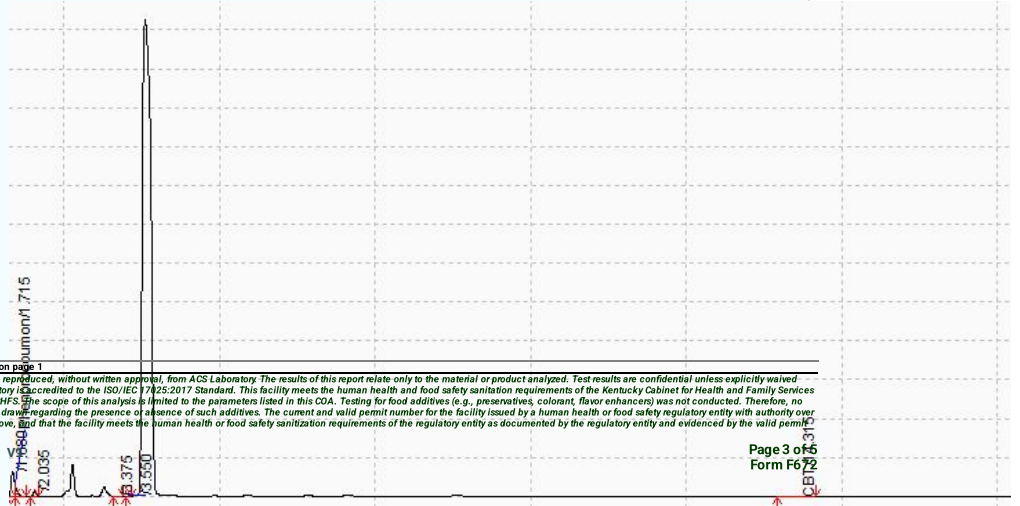
**Net Weight per Package:**  
11392.000 mg

**Net Weight per Serving:**  
11392 mg  
**Servings Per Package:**  
1

### National Panel Potency



### National Panel Potency



*Aixia Sun*  
Aixia Sun Lab Director/Principal Scientist  
D.H.Sc., M.Sc., B.Sc., MT (AAB)



Definitions are found on page 1.  
This report shall not be reproduced, without written approval, from ACS Laboratory. The results of this report relate only to the material or product analyzed. Test results are confidential unless explicitly waived otherwise. ACS Laboratory is accredited to the ISO/IEC 17025:2017 Standard. This facility meets the human health and food safety sanitation requirements of the Kentucky Cabinet for Health and Family Services as documented by KYCHFS. The scope of this analysis is limited to the parameters listed in this COA. Testing for food additives (e.g., preservatives, colorant, flavor enhancers) was not conducted. Therefore, no conclusions should be drawn regarding the presence or absence of such additives. The current and valid permit number for the facility issued by a human health or food safety regulatory entity with authority over the facility is stated above, and that the facility meets the human health or food safety sanitation requirements of the regulatory entity as documented by the regulatory entity and evidenced by the valid permit number.

QA By: 1057 on 2025-10-29 18:14:16

Page 3 of 5  
Form F672

Certificate of Analysis  
Compliance TestCBD Isolate  
Sample Matrix:  
HEMP  
Extract  
Ingestion**Client Information:**  
ERG Consultants  
6547 N Academy Blvd  
#2376  
Colorado Springs,  
Colorado 80918**Manufacturing Facility:**  
ERG Consultants  
6547 N Academy Blvd  
#2376  
Colorado Springs, Colorado 80918  
Production Date: 2025-10-16**Batch Data:**  
Batch # ERG-1003  
Batch Date: 2025-10-22  
Extracted From: Hemp**Order Details:**  
Test Reg State: Florida**Food Permits:****Order #**  
ERG251022-010001  
**Order Date:** 2025-10-22  
**Sample #** AAHE025**Sampling Date:** 2025-10-23  
**Lab Batch Date:** 2025-10-23  
**Completion Date:** 2025-10-29**Initial Gross Weight:** 66.100 g  
**Net Weight:** 11.392 g**Net Weight per Package:**  
11392.000 mg**Net Weight per Serving:**  
11392 mg  
**Servings Per Package:**  
1

## Heavy Metals

Specimen Weight: 251.200 mg

Passed

SOP13.048 (ICP-MS)

Dilution Factor: 199

Analyte	LOD (ppb)	LOQ (ppb)	Action Level (ppb)	Result (ppb)	Analyte	LOD (ppb)	LOQ (ppb)	Action Level (ppb)	Result (ppb)
Arsenic (As)	4.830	100	1500	<LOQ	Lead (Pb)	11.760	100	500	<LOQ
Cadmium (Cd)	0.640	100	500	<LOQ	Mercury (Hg)	0.580	100	3000	<LOQ



## Residual Solvents - FL (CBD)

Specimen Weight: 295.000 mg

Passed

SOP13.039 (GCMS-HS)

Dilution Factor: 1.000

Analyte	LOD (ppm)	LOQ (ppm)	Action Level (ppm)	Result (ppm)	Analyte	LOD (ppm)	LOQ (ppm)	Action Level (ppm)	Result (ppm)
1,1-Dichloroethene	0.009	1.6	8	<LOQ	Heptane	0.001	13.9	5000	2100
1,2-Dichloroethane	0.000	0.4	2	<LOQ	Hexane	0.068	11.7	250	<LOQ
Acetone	0.015	20.8	750	<LOQ	Isopropyl alcohol	0.005	13.9	500	<LOQ
Acetonitrile	0.060	11.7	60	<LOQ	Methanol	0.001	6.9	250	<LOQ
Benzene	0.000	0.2	1	<LOQ	Methylene chloride	0.003	24.3	125	<LOQ
Butanes	0.417	25	5000	<LOQ	Pentane	0.037	20.8	750	<LOQ
Chloroform	0.000	0.4	2	<LOQ	Propane	0.031	58.3	5000	<LOQ
Ethanol	0.002	27.8	NA	<LOQ	Toluene	0.001	29.2	150	<LOQ
Ethyl Acetate	0.001	11.1	400	<LOQ	Total Xylenes	0.000	29.2	150	<LOQ
Ethyl Ether	0.005	13.9	500	<LOQ	Trichloroethylene	0.001	4.9	25	<LOQ
Ethylene Oxide	0.004	1	5	<LOQ					

  
Aixa Sun Lab Director/Principal Scientist  
D.H.Sc., M.Sc., B.Sc., MT (AAB)

Definitions are found on page 1

This report shall not be reproduced, without written approval, from ACS Laboratory. The results of this report relate only to the material or product analyzed. Test results are confidential unless explicitly waived otherwise. ACS Laboratory is accredited to the ISO/IEC 17025:2017 Standard. This facility meets the human health and food safety sanitation requirements of the Kentucky Cabinet for Health and Family Services as documented by KYCHFS. The scope of this analysis is limited to the parameters listed in this COA. Testing for food additives (e.g., preservatives, colorant, flavor enhancers) was not conducted. Therefore, no conclusions should be drawn regarding the presence or absence of such additives. The current and valid permit number for the facility issued by a human health or food safety regulatory entity with authority over the facility is stated above, and that the facility meets the human health or food safety sanitation requirements of the regulatory entity as documented by the regulatory entity and evidenced by the valid permit number.

QA By: 1057 on 2025-10-29 18:14:16 V1

Page 4 of 5  
Form F672

## Certificate of Analysis

### Compliance Test

**CBD Isolate**  
Sample Matrix:  
HEMP  
Extract  
Ingestion



**Client Information:**  
**ERG Consultants**  
6547 N Academy Blvd  
#2376  
Colorado Springs,  
Colorado 80918

**Manufacturing Facility:**  
ERG Consultants  
6547 N Academy Blvd  
#2376  
Colorado Springs, Colorado 80918  
Production Date: 2025-10-16

**Batch Data:**  
Batch # ERG-1003  
Batch Date: 2025-10-22  
Extracted From: Hemp

**Order Details:**  
Test Reg State: Florida

**Food Permits:**

**Order #**  
ERG251022-010001  
**Order Date:** 2025-10-22  
**Sample #** AAHE025

**Sampling Date:** 2025-10-23  
**Lab Batch Date:** 2025-10-23  
**Completion Date:** 2025-10-29

**Initial Gross Weight:** 66.100 g  
**Net Weight:** 11.392 g

**Net Weight per Package:**  
11392.000 mg

**Net Weight per Serving:**  
11392 mg  
**Servings Per Package:**  
1

**Pesticides Florida**  
Specimen Weight: 589.200 mg

**Passed**  
SOP13.007 (LCMS/GCMS)

Dilution Factor: 2.550

Analyte	LOD (ppb)	LOQ (ppb)	Action Level (ppb)	Result (ppb)	Analyte	LOD (ppb)	LOQ (ppb)	Action Level (ppb)	Result (ppb)
Abamectin	0.399	23.3	300	<LOQ	Flonicamid	0.466	24.8	2000	<LOQ
Acephate	0.141	24.8	3000	<LOQ	Fludioxonil	0.360	24.8	3000	<LOQ
Acequinocyl	2.178	24.8	2000	<LOQ	Hexythiazox	0.113	24.8	2000	<LOQ
Acetamiprid	0.140	24.8	3000	<LOQ	Imazali	0.258	24.8	100	<LOQ
Aldicarb	0.203	24.8	100	<LOQ	Imidacloprid	0.402	24.8	3000	<LOQ
Azoxystrobin	0.188	24.8	3000	<LOQ	Kresoxim Methyl	0.182	24.8	1000	<LOQ
Bifenazate	0.086	24.8	3000	<LOQ	Malathion	0.223	24.8	2000	<LOQ
Bifenthrin	0.100	24.8	500	<LOQ	Metaxyl	0.270	24.8	3000	<LOQ
Boscalid	0.595	24.8	3000	<LOQ	Methiocarb	0.118	24.8	100	<LOQ
Captan	1.850	323	3000	<LOQ	Methomyl	0.064	24.8	100	<LOQ
Carbaryl	0.122	24.8	500	<LOQ	methyl-Parathion	2.390	24.8	100	<LOQ
Carbofuran	0.086	24.8	100	<LOQ	Mevinphos	0.093	24.8	100	<LOQ
Chlorantraniliprole	0.084	24.8	3000	<LOQ	Myclobutanil	0.573	24.8	3000	<LOQ
Chlordane	9.671	24.8	100	<LOQ	Naled	0.069	24.8	500	<LOQ
Chlorfenapyr	1.500	24.8	100	<LOQ	Oxamyl	0.041	24.8	500	<LOQ
Chlormequat Chloride	0.205	24.8	3000	<LOQ	Paclobutrazol	0.065	24.8	100	<LOQ
Chlorpyrifos	0.109	24.8	100	<LOQ	Pentachloronitrobenzene	7.950	24.8	200	<LOQ
Clofentezine	0.212	24.8	500	<LOQ	Permethrin	0.624	24.8	1000	<LOQ
Coumaphos	0.206	24.8	100	<LOQ	Phosmet	0.127	24.8	200	<LOQ
Cyfluthrin	0.980	24.8	1000	<LOQ	Piperonylbutoxide	0.149	24.8	3000	<LOQ
Cypermethrin	0.985	24.8	1000	<LOQ	Prallethrin	1.476	24.8	400	<LOQ
Daminozide	1.655	24.8	100	<LOQ	Propiconazole	0.294	24.8	1000	<LOQ
Diazinon	0.212	24.8	200	<LOQ	Propoxur	0.100	24.8	100	<LOQ
Dichlorvos	1.130	24.8	100	<LOQ	Pyrethrins	0.067	12.9	1000	<LOQ
Dimethoate	0.063	24.8	100	<LOQ	Pyridaben	0.140	24.8	3000	<LOQ
Dimethomorph	2.581	24.8	3000	<LOQ	Spinetoram	0.424	24.8	3000	<LOQ
Ethoprophos	0.151	24.8	100	<LOQ	Spiromesifen	0.120	24.8	3000	<LOQ
Etofenprox	0.172	24.8	100	<LOQ	Spirotetramat	0.211	24.8	30000	<LOQ
Etoxazole	0.866	24.8	1500	<LOQ	Spiroxamine	0.533	24.8	100	<LOQ
Fenhexamid	0.588	24.8	30000	<LOQ	Tebuconazole	0.230	24.8	1000	<LOQ
Fenoxycarb	0.274	24.8	100	<LOQ	Thiacloprid	0.170	24.8	100	<LOQ
Fenpyroximate	0.198	24.8	2000	<LOQ	Thiamethoxam	0.179	24.8	1000	<LOQ
Fipronil	0.317	24.8	100	<LOQ	Trifloxystrobin	0.134	24.8	3000	<LOQ

*Aixia Sun*  
Aixia Sun Lab Director/Principal Scientist  
D.H.Sc., M.Sc., B.Sc., MT (AAB)



Definitions are found on page 1

This report shall not be reproduced, without written approval, from ACS Laboratory. The results of this report relate only to the material or product analyzed. Test results are confidential unless explicitly waived otherwise. ACS Laboratory is accredited to the ISO/IEC 17025:2017 Standard. This facility meets the human health and food safety sanitation requirements of the Kentucky Cabinet for Health and Family Services as documented by KYCHFS. The scope of this analysis is limited to the parameters listed in this COA. Testing for food additives (e.g., preservatives, colorant, flavor enhancers) was not conducted. Therefore, no conclusions should be drawn regarding the presence or absence of such additives. The current and valid permit number for the facility issued by a human health or food safety regulatory entity with authority over the facility is stated above, and that the facility meets the human health or food safety sanitation requirements of the regulatory entity as documented by the regulatory entity and evidenced by the valid permit number.

QA By: 1057 on 2025-10-29 18:14:16 V1

Page 5 of 5  
Form F672